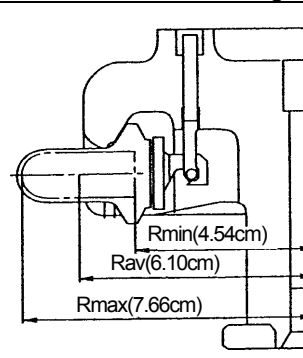


Carefully read the centrifuge instruction manual and the rotor instruction manual before using the rotor.

S55S Swing rotor

Max. speed	55,000 rpm
Max. R.C.F.	259,000 × g
Rotor nominal capacity	8.8ml=4 × 2.2ml
k factor	44



(1) Summary of tubes

Tube				Space cap or Crown		Maximum speed (rpm)	Maximum R.C.F. (× g)
Part No.	Name	Size (φ × L cm)	Net capacity (ml)	Part No.	Name		
S300536A	2.2 PA Tube	1.1×3.4	2.2	---	---	55,000	259,000
S300538A	2.2 PET Tube	1.1×3.4	2.2	---	---	55,000	259,000
S300535A	1 PC Tube	1.1×3.4	1.4	---	---	55,000	259,000

(2) Standard accessories

Part No.	Name	Q'ty
S300536A	2.2 PA Tube	2 (50pcs/box)
8062214	O-ring	8
474215	Cap spanner	1
S301310A	Bucket stand	1
452701	Tweezers	1
Common accessories of all rotors (see Appendix)		1

(3) Separation characteristics table

Speed (rpm)	Max. R.C.F.(×g)			k factor
	Rmin (4.54cm)	Rav (6.10cm)	Rmax (7.66cm)	
10,000	4,800	6,690	8,560	1,468
15,000	10,800	15,000	19,300	653
20,000	19,200	26,700	34,300	367
25,000	30,000	41,800	53,500	235
30,000	43,200	60,200	77,100	163
35,000	58,800	81,900	105,000	120
40,000	76,700	107,000	137,000	92
45,000	97,100	135,000	173,000	73
50,000	120,000	167,000	214,000	59
55,000	145,000	202,000	259,000	44